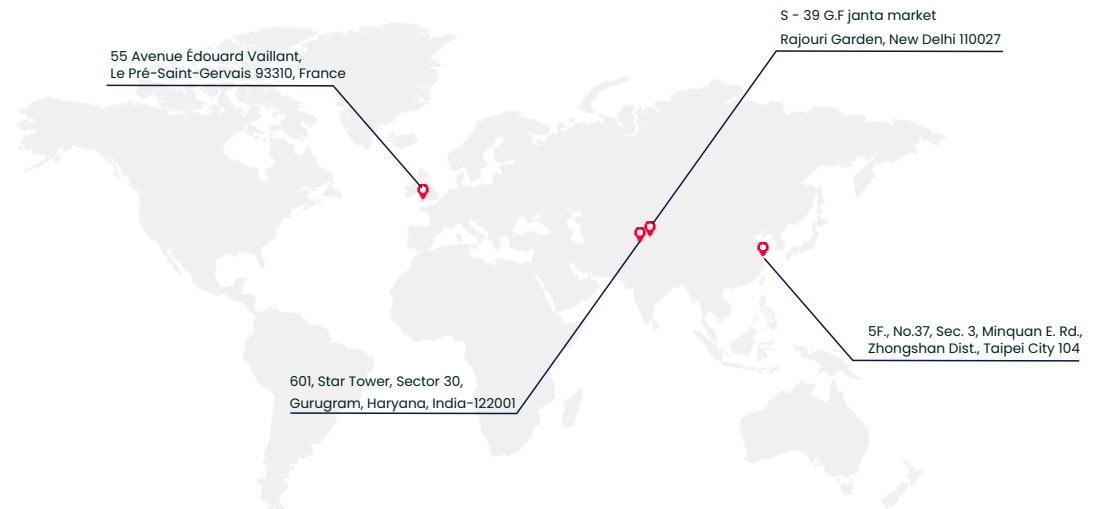


# EMPOWERING MEGAPIXEL



"GVD is invested in **INCLUSIVE GROWTH** with partners and customers. Collaborating for Innovative System Solutions in the field of Enterprise Video Management, AI, and informed decision making since 2007."



**17**  
Years In Business

**04**  
Locations

**07**  
Unique Service Product Offering

**100+**  
Countries Presence

**500+**  
Customes

**500+**  
Projects Delivered

**100+**  
Business From Repeat Customers

**95%+**  
Customer Satisfaction

## CORE VALUES

1.


### Commitment

You care about the world we live in, and we imbibe that value in our products and solutions to ensure everything that we make is reliable, trusted and does the best job in protecting lives and property worldwide.

2.


### Context

We do a careful need analysis for our customers and provide local solutions tailored to meet their demands.

3.


### Contrive

We believe in evolution to continuously innovate with the rapidly changing technology. We passionately research and develop the most technologically advanced products to make our customers stay ahead.

4.


### Compassionate

We are compassionate about people working with us. We strive to treat them with utmost respect and deliver on our promises. We constantly work to create exceptional value for everyone around us.

5.


### Collaborate

We are all different!! Diversity in our team creates an atmosphere of collaboration and empathy thus bridging gaps and bring out the best in each other everyday.

6.


### Celebrate

Life is a celebration, and we want to make the most of it - so we celebrate. From birthdays, anniversaries of our partners and employees to small and big wins. We believe celebration brings appreciation and a bit of it every now and then goes a long way to create the camaraderie we all need.

## MEET THE BENEFITS

**LUMINA – THE FUTURE OF SURVEILLANCE, WHERE CUTTING-EDGE TECHNOLOGY SEAMLESSLY MERGES WITH UNPARALLELED RELIABILITY, DELIVERING A SUITE OF BENEFITS THAT REDEFINE SECURITY.**



**INDUSTRY-COMPLIANT SOLUTION**



**ROBUST WEATHER RESISTANCE**



**HIGH DEFINITION IMAGE QUALITY**



**ENHANCED NIGHT VISION**



**SECURE STREAM VIDEO ENCRYPTION**



**ENHANCED STORAGE SPACE**



**ADVANCED APPLIED INTELLIGENCE**



**COST EFFECTIVE SURVEILLANCE**

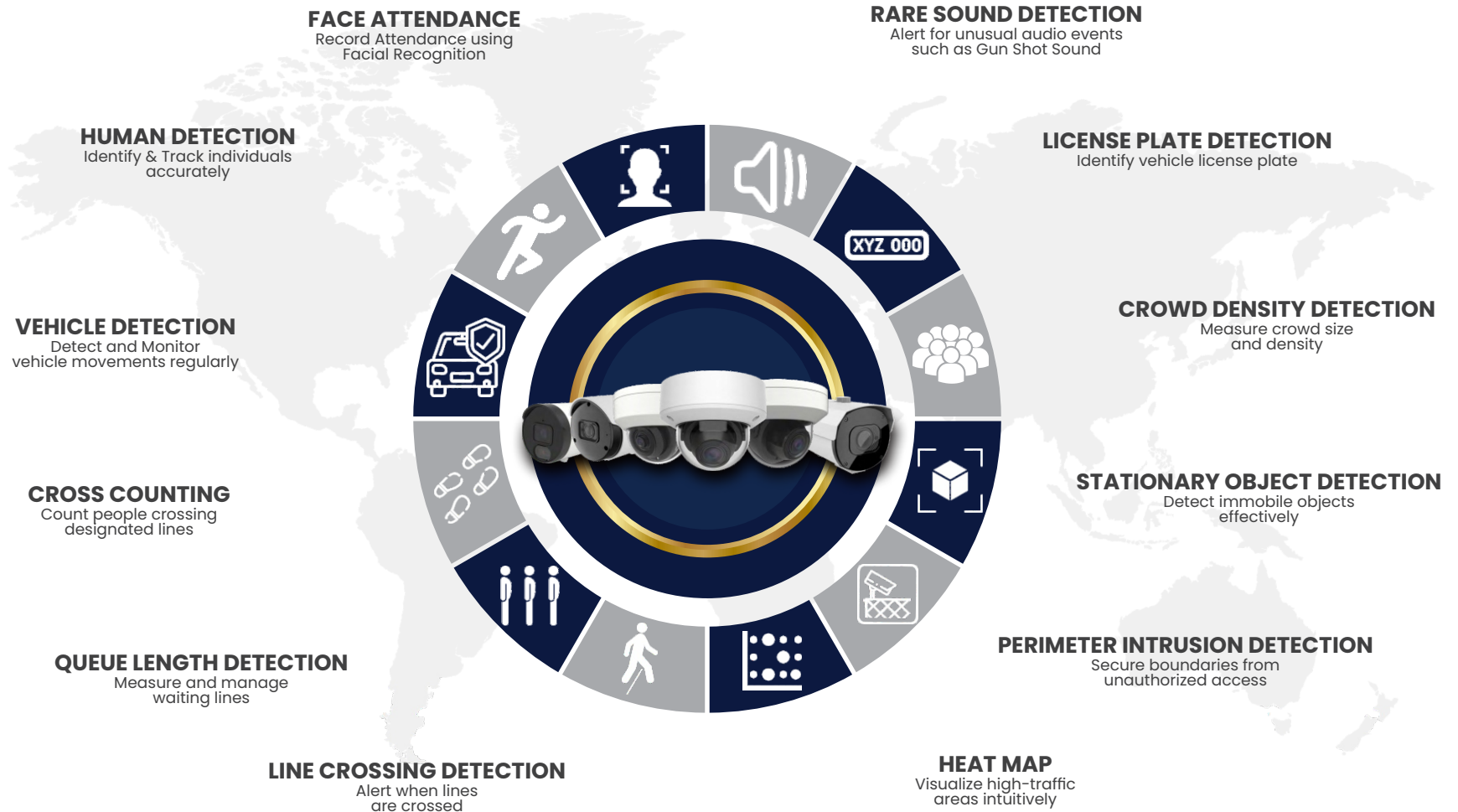


**ROBUST VANDAL PROOFING**



**EFFORTLESS INSTALLATION & INTEGRATION**

## APPLIED INTELLIGENCE







This high-performance IP camera is an ideal choice for use in exposed Indoor/outdoor locations that feature lots of traffic. Its innovative dual chipset enables improved performance of analytics and imaging technologies for reliable solution. With its robust construction, tamper-resistant casing, and advanced image stabilization technology, it ensures uninterrupted surveillance in any situation. Experience unrivaled security with our Lumina series vandal-proof camera.



Human Detection



Face Attendance



Cross Counting



Queue Length Detection



Vehicle Detection



Line Crossing Detection



Stationary Object Detection



Perimeter Intrusion Detection



Crowd Density Detection



Heat Map



License Plate Detection



Rare Sound Detection

### 2MP MINI DOME IP NETWORK CAMERA



#### GV-DNC283

- 2MP @25FPS, 1920x1080
- 1/3" Progressive CMOS(Scanning System)
- Fixed Lens: 3.6mm
- IR Distance up to 30M
- Support DWDR, BLC/DNR/AGC/WB
- Dual Streaming Capability
- Motion Detection Analytics
- ONVIF Compatible
- Support Micro SD Card up to 256GB
- Built-in Microphone
- Housing: Metal & IP66

### 2MP MINI DOME IP NETWORK CAMERA



#### GV-DNC273

- 2MP @25FPS, 1920x1080
- 1/3" Progressive CMOS(Scanning System)
- Fixed Lens: 3.6mm
- IR Distance up to 30M
- Support DWDR, BLC/DNR/AGC/WB
- Dual Streaming Capability
- ONVIF Profile Support S, G & T
- Support Micro SD Card up to 256GB
- Built-in Microphone
- AI- MD, H&VD, PID, LCD
- Housing: Metal & IP66

### 2MP FIXED DOME IP NETWORK CAMERA



#### GV-DNC273-P-AI

- 2MP @60FPS, 1920x1080
- 1/2.8" Progressive CMOS(Scanning System)
- Fixed Lens: 3.6mm
- IR Distance up to 30M
- Support 120dB WDR, BLC/DNR/AGC/WB
- Triple Streaming Capability
- ONVIF Profile Support S, G & T
- Support Micro SD Card up to 256GB
- Built-in Microphone
- Applied Intelligence\*
- Housing: Metal & IP67

### 5MP FIXED DOME IP NETWORK CAMERA



#### GV-DNC473

- 5MP @30FPS, 2592x1944
- 1/2.7" Progressive CMOS(Scanning System)
- Fixed Lens: 3.6mm
- IR Distance up to 30M
- Support DWDR, BLC/DNR/AGC/WB
- Triple Streaming Capability
- ONVIF Profile Support S, G & T
- Support Micro SD Card up to 256GB
- Built-in Microphone
- AI- MD, H&VD, PID, LCD
- Housing: Metal & IP67

### 5MP FIXED DOME IP NETWORK CAMERA



#### GV-DNC473-P-AI

- 5MP @30FPS, 2880x1620
- 1/2.7" Progressive CMOS(Scanning System)
- Fixed Lens: 3.6mm
- IR Distance up to 30M
- Support 120dB WDR, BLC/DNR/AGC/WB
- Triple Streaming Capability
- ONVIF Profile Support S, G & T
- Support Micro SD Card up to 256GB
- Built-in Microphone
- Applied Intelligence\*
- Housing: Metal & IP67

### 8MP FIXED DOME IP NETWORK CAMERA



#### GV-DNC473-P-AI(K)

- 8MP @20FPS, 4K Resolution
- 1/2.7" Progressive CMOS(Scanning System)
- Fixed Lens: 3.6mm
- IR Distance up to 30M
- Support DWDR, BLC/DNR/AGC/WB
- Triple Streaming Capability
- ONVIF Profile Support S, G & T
- Support Micro SD Card up to 256GB
- Built-in Microphone
- Applied Intelligence\*
- Housing: Metal & IP67

### 2MP VANDAL PROOF DOME IP NETWORK CAMERA



#### GV-DNC275

- 2MP @30FPS, 1920x1080
- 1/2.8" Progressive CMOS(Scanning System)
- Fixed Lens: 2.8mm
- IR Distance up to 30M
- Support DWDR, BLC/DNR/AGC/WB
- Dual Streaming Capability
- ONVIF Profile Support S, G & T
- Support Micro SD Card up to 256GB
- Built-in Microphone
- AI-Motion Detection
- Housing: Metal & IP67/IK10

### 2MP VANDAL PROOF DOME IP NETWORK CAMERA



#### GV-DNC275-AI

- 2MP @60FPS, 1920x1080
- 1/2.8" Progressive CMOS(Scanning System)
- Fixed Lens: 2.8mm
- IR Distance up to 30M
- Support 120dB WDR, BLC/DNR/AGC/WB
- Triple Streaming Capability
- ONVIF Profile Support S, G & T
- Support Micro SD Card up to 256GB
- Audio: 1 In/1 Out, Alarm: 1 In / 1 Out
- Applied Intelligence\*
- Housing: Metal & IP67/IK10

### 5MP VANDAL PROOF DOME IP NETWORK CAMERA



#### GV-DNC575

- 5MP @30FPS, 2880x1620
- 1/2.7" Progressive CMOS(Scanning System)
- Fixed Lens: 2.8mm
- IR Distance up to 30M
- Support 120dB WDR, BLC/DNR/AGC/WB
- Triple Streaming Capability
- ONVIF Profile Support S, G & T
- Support Micro SD Card up to 256GB
- Built-in Microphone
- Applied Intelligence\*
- Housing: Metal & IP67/IK10

### 2MP MOTORIZED VARIFOCAL DOME IP NETWORK CAMERA



#### GV-DNC473-MV

- 2MP @60FPS, 1920x1080
- 1/2.8" Progressive CMOS(Scanning System)
- Motorized Lens: 2.8-12mm
- IR Distance up to 30M
- Support 120dB WDR, BLC/DNR/AGC/WB
- Triple Streaming Capability
- ONVIF Profile Support S, G & T
- Support Micro SD Card up to 256GB
- Alarm: 1 In/Out, Audio: 1 In/Out
- Applied Intelligence\*
- Housing: Metal & IP67

### 5MP MOTORIZED VARIFOCAL DOME IP NETWORK CAMERA



#### GV-DNC473-MV-P

- 5MP @30FPS, 2880x1620
- 1/2.7" Progressive CMOS(Scanning System)
- Motorized Lens: 2.8-12mm
- IR Distance up to 30M
- Support 120dB WDR, BLC/DNR/AGC/WB
- Triple Streaming Capability
- ONVIF Profile Support S, G & T
- Support Micro SD Card up to 256GB
- Audio: 1 In/Out, Alarm I/O (Optional)
- Applied Intelligence\*
- Housing: Metal & IP67

### 8MP MOTORIZED VARIFOCAL DOME IP NETWORK CAMERA



#### GV-DNC473-MV-P(K)

- 8MP @25FPS, 4K Resolution
- 1/2.7" Progressive CMOS(Scanning System)
- Motorized Lens: 2.7-13.5mm
- IR Distance up to 30M
- Support DWDR, BLC/DNR/AGC/WB
- Triple Streaming Capability
- ONVIF Profile Support S, G & T
- Support SD Card up to 256GB
- Audio: 1 In/Out
- Applied Intelligence\*
- Housing: Metal & IP67

### 2MP COLOR DOME IP NETWORK CAMERA



#### GV-DNC283-C

- 2MP @30FPS, 1920x1080
- 1/3" Progressive CMOS(Scanning System)
- Fixed Lens: 3.6mm
- IR Distance up to 30M
- Support DWDR, BLC/DNR/AGC/WB
- Triple Streaming Capability
- ONVIF Profile Support S, G & T
- Support SD Card up to 256GB
- Built-in Microphone
- AI: MD, PID, LCD
- Housing: Semi Metal & IP66

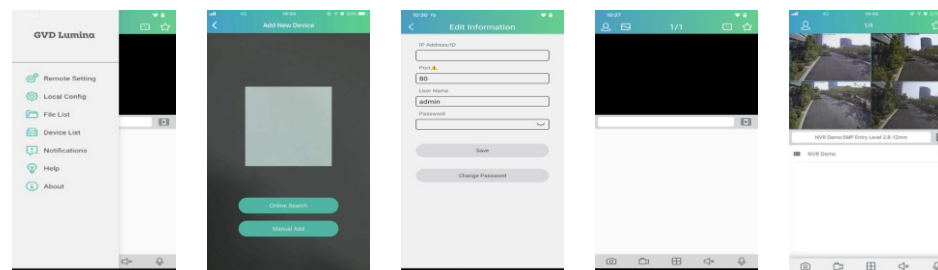
### 12MP FISHEYE IP NETWORK CAMERA



#### GV-DNC8742

- 12MP @25FPS, 4000x3000
- 1/2.3" Progressive CMOS(Scanning System)
- Lens: 1.6mm
- IR Distance up to 10M
- Support DWDR, BLC/DNR/AGC/WB
- Triple Streaming Capability
- ONVIF Compatible
- Support Micro SD Card up to 256GB
- Built-in Microphone
- Housing: Metal & IP66

## Mobile App - GVD Lumina





High resolution combined with a high frame rate, Lumina motorized cameras are designed with motorized lens for monitoring and identifying events without delay, in large areas, without any loss of detail and, at the same time, saving on additional device costs. The optical sensors, professional lenses and ICR filter guarantee quality video, even at night. Lumina series cameras are designed to host on-edge video analysis functionalities.



Human Detection



Face Attendance



Cross Counting



Queue Length  
Detection



Vehicle Detection



Line Crossing  
Detection



Stationary Object  
Detection



Perimeter Intrusion  
Detection



Crowd Density  
Detection



Heat Map



License Plate  
Detection



Rare Sound  
Detection

### 2MP MINI BULLET IP NETWORK CAMERA



#### GV-DNC263

- 2MP @30FPS, 1920x1080
- 1/3" Progressive CMOS(Scanning System)
- Fixed Lens: 3.6mm
- IR Distance up to 30M
- Support DWDR, BLC/DNR/AGC/WB
- Dual Streaming Capability
- ONVIF Profile Support
- Support Micro SD Card up to 256GB
- Built-in Microphone
- AI: MD, V&HD
- Housing: Metal & IP66

### 2MP MINI BULLET IP NETWORK CAMERA



#### GV-DNC264

- 2MP @25FPS, 1920x1080
- 1/3" Progressive CMOS(Scanning System)
- Fixed Lens: 3.6mm
- IR Distance up to 30M
- Support DWDR, BLC/DNR/AGC/WB
- Dual Streaming Capability
- ONVIF Profile Support S, G & T
- Support Micro SD Card up to 256GB
- Built-in Microphone
- AI: MD, PID, LCD
- Housing: Metal & IP66

### 5MP MINI BULLET IP NETWORK CAMERA



#### GV-DNC464-P-AI

- 5MP @30FPS, 2880x1620
- 1/2.7" Progressive CMOS(Scanning System)
- Fixed Lens: 3.6mm
- IR Distance up to 30M
- Support 120dB WDR, BLC/DNR/AGC/WB
- Triple Streaming Capability
- ONVIF Profile Support S, G & T
- Support Micro SD Card up to 256GB
- Built-in Microphone
- Applied Intelligence\*
- Housing: Metal & IP67

### 8MP FIXED BULLET IP NETWORK CAMERA



#### GV-DNC464-P-AI(K)

- 8MP @25FPS, 3840x2160
- 1/2.7" Progressive CMOS(Scanning System)
- Fixed Lens: 3.6mm
- IR Distance up to 30M
- Support DWDR, BLC/DNR/AGC/WB
- Triple Streaming Capability
- ONVIF Profile Support S, G & T
- Support Micro SD Card up to 256GB
- Built-in Microphone
- Applied Intelligence\*
- Housing: Metal & IP67

### 5MP FIXED BULLET IP NETWORK CAMERA



#### GV-DNC564

- 5MP @20FPS, 2592x1944
- 1/2.7" Progressive CMOS(Scanning System)
- Fixed Lens: 3.6mm
- IR Distance up to 30M
- Support DWDR, BLC/DNR/AGC/WB
- Triple Streaming Capability
- Motion Detection Analytics
- ONVIF Profile Support S, G & T
- Support Micro SD Card up to 256GB
- Built-in Microphone
- Housing: Metal & IP66

### 8MP FIXED BULLET IP NETWORK CAMERA



#### GV-DNC564(K)

- 8MP @20FPS, 3840x2160
- 1/2.7" Progressive CMOS(Scanning System)
- Fixed Lens: 3.6mm
- IR Distance up to 30M
- Support DWDR, BLC/DNR/AGC/WB
- Triple Streaming Capability
- ONVIF Profile Support S, G & T
- Support Micro SD Card up to 256GB
- Built-in Microphone
- Applied Intelligence\*
- Housing: Metal & IP67

### 2MP MOTORIZED VARIFOCAL BULLET IP NETWORK CAMERA



#### GV-DNC264-MV-P-AI

- 2MP @60FPS, 1920x1080
- 1/2.8" Progressive CMOS(Scanning System)
- Motorized Lens: 2.8-12mm
- IR Distance up to 50M
- Support 120dB WDR, BLC/DNR/AGC/WB
- Triple Streaming Capability
- ONVIF Profile Support S, G & T
- Support Micro SD Card up to 256GB
- Audio: 1 In/Out, Alarm: 1 In / Out
- Applied Intelligence\*
- Housing: Metal & IP67

### 5MP MOTORIZED VARIFOCAL BULLET IP NETWORK CAMERA



#### GV-DNC464-MV-P-AI

- 5MP @30FPS, 2880x1620
- 1/2.7" Progressive CMOS(Scanning System)
- Motorized Lens: 2.8-12mm
- IR Distance up to 50M
- Support 120dB WDR, BLC/DNR/AGC/WB
- Triple Streaming Capability
- ONVIF Profile Support S, G & T
- Support Micro SD Card up to 256GB
- Audio: 1 In/Out, Alarm: 1 In/Out
- Applied Intelligence\*
- Housing: Metal & IP67

#### 5MP MOTORIZED VARIFOCAL BULLET IP NETWORK CAMERA



##### GV-DNC464-MV-P-AI (Without AIO)

- 5MP @30FPS, 2880x1620
- 1/2.7" Progressive CMOS(Scanning System)
- Motorized Lens: 2.8-12mm
- IR Distance up to 50M
- Support 120dB WDR, BLC/DNR/AGC/WB
- Triple Streaming Capability
- ONVIF Profile Support S, G & T
- Support Micro SD Card up to 256GB
- Audio: 1 In/Out
- Applied Intelligence\*
- Housing: Metal & IP67

#### 8MP MOTORIZED VARIFOCAL BULLET IP NETWORK CAMERA



##### GV-DNC464-MV-P-AI(K)

- 8MP @20FPS, 3840x2160
- 1/2.7" Progressive CMOS(Scanning System)
- Fixed Lens: 2.7-13.5mm
- IR Distance up to 50M
- Support DWDR, BLC/DNR/AGC/WB
- Triple Streaming Capability
- ONVIF Profile Support S, G & T
- Support Micro SD Card up to 256GB
- Audio: 1 In/Out
- Applied Intelligence\*
- Housing: Metal & IP67

#### 2MP MOTORIZED BULLET IP NETWORK CAMERA



##### GV-DNC264-MV-P-AI(L)

- 2MP @60FPS, 1920x1080
- 1/2.8" Progressive CMOS(Scanning System)
- Motorized Lens: 5-50mm
- IR Distance up to 80M
- Support 120dB WDR, BLC/DNR/AGC/WB
- Triple Streaming Capability
- ONVIF Profile Support S, G & T
- Support Micro SD Card up to 256GB
- Audio: 1 In/Out, Alarm: 1 In / Out
- Applied Intelligence\*
- Housing: Metal & IP67

#### 5MP MOTORIZED BULLET IP NETWORK CAMERA



##### GV-DNC464-MV-P-AI(L)

- 5MP @30FPS, 2880x1620
- 1/2.7" Progressive CMOS(Scanning System)
- Motorized Lens: 5-50mm
- IR Distance up to 80M
- Support 120dB WDR, BLC/DNR/AGC/WB
- Triple Streaming Capability
- ONVIF Profile Support S, G & T
- Support Micro SD Card up to 256GB
- Audio: 1 In/Out, Alarm: 1 In / Out
- Applied Intelligence\*
- Housing: Metal & IP67

#### 2MP COLOR BULLET IP NETWORK CAMERA



##### GV-DNC264-C

- 2MP @25FPS, 1920x1080
- 1/3" Progressive CMOS(Scanning System)
- Fixed Lens: 3.6mm
- IR Distance up to 30M
- Support DWDR, BLC/DNR/AGC/WB
- Triple Streaming Capability
- ONVIF Profile Support S, G & T
- Support SD Card up to 256GB
- Built-in Microphone
- AI: H&VD, PID, LCD
- Housing: Metal & IP66

#### 2MP SPEED DOME PTZ WITH 18X IP NETWORK CAMERA



##### GV-DNC561-X10W

- 2MP @30FPS, 1920x1080
- 1/2.7" Progressive CMOS(Scanning System)
- Lens: 5.0-90mm
- IR Distance up to 150M
- Support 120dB WDR, BLC/DNR/AGC/WB
- Triple Streaming Capability
- ONVIF Profile Support S, G & T
- Support Micro SD Card up to 256GB
- Audio: 1 In / Out, Alarm: 1 In / Out
- Applied Intelligence\*
- Housing: Metal & IP66

#### 2MP SPEED DOME PTZ WITH 25X IP NETWORK CAMERA



##### GV-DNC541-30

- 2MP @30FPS, 1920x1080
- 1/2.8" Progressive CMOS(Scanning System)
- Lens: 5.0-125mm
- IR Distance up to 150M
- Support 120dB WDR, BLC/DNR/AGC/WB
- Triple Streaming Capability
- ONVIF Profile Support S, G & T
- Support Micro SD Card up to 256GB
- Audio: 1 In / Out, Alarm: 1 In / Out
- Applied Intelligence\*
- Housing: Metal & IP66

#### 5MP SPEED DOME PTZ WITH 33X IP NETWORK CAMERA



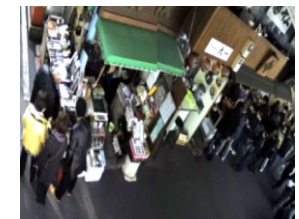
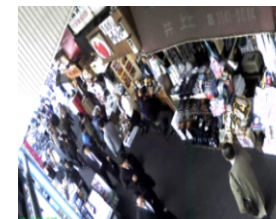
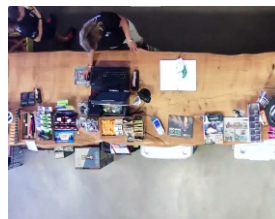
##### GV-DNC541-36

- 5MP @30FPS, 2592x1944
- 1/2.7" Progressive CMOS(Scanning System)
- Lens: 4.3-142mm
- IR Distance up to 200M
- Support 120dB WDR, BLC/DNR/AGC/WB
- Triple Streaming Capability
- ONVIF Profile Support S, G & T
- Support Micro SD Card up to 256GB
- Audio: 1 In / Out, Alarm: 1 In / Out
- Applied Intelligence\*
- Housing: Metal & IP66





Experience the power of Octocam Fisheye camera, providing wide-area coverage with a single device. Monitor and detect incidents in large areas, track the flow of people, and enhance area management effortlessly. With the ability to replace multiple cameras, our fisheye camera not only saves you installation space but also reduces system costs. Embrace the future of surveillance with our advanced fisheye camera technology.





The Octocam PTZ camera employs pan, tilt, and zoom functions to deliver extensive coverage and exceptional detail in a single device. Its superior image quality and zoom capability enable effective verification of security alerts. Packed with intelligent features, it seamlessly shifts between preset viewpoints and automatically zooms in when triggered by events. Furthermore, effortless integration with other cameras within a system adds to its versatility and utility.



Human Detection

Face Attendance

Cross Counting

Queue Length  
Detection

Vehicle Detection

Line Crossing  
Detection

Stationary Object  
Detection

Perimeter Intrusion  
Detection

Crowd Density  
Detection

Heat Map

License Plate  
Detection

Rare Sound  
Detection



## NVR FEATURES



### RAID

Ensure data redundancy and reliability through RAID technology, safeguarding against drive failures and data loss.



### 4K ULTRA HD

Capture crystal-clear video with incredible detail and resolution for precise surveillance monitoring.



### ANALYTICS DASHBOARD

Access real-time insights and trends, transforming raw data into actionable information for informed decision-making.



### TAG MANAGEMENT

Organize and categorize video footage efficiently, simplifying retrieval and analysis of specific events.



### S.M.A.R.T

Proactively monitor system health through Self-monitoring, Analysis, and Reporting Technology, preventing potential issues.



### SYNCHRONOUS PLAYBACK

Simultaneously review multiple camera feeds, enhancing the ability to analyze incidents from different angles.



### H.265+ VIDEO COMPRESSION

Maximize storage efficiency while maintaining high quality video, reducing bandwidth and storage requirement

### 8 CHANNEL NETWORK VIDEO RECORDER



#### GV-0901

- 8 CH HD NVR
- Operating System: Embedded Linux
- Recording Resolution up to 8 MP
- 1\*SATA HDD
- Up to 8 TB capacity for each HDD
- H.265+ Video Compression
- Video Output: 1xHDMI, 1xVGA
- ONVIF Compatibility
- Audio: In/Out
- Applied Intelligence Support
- Analytics Dashboard

### 16 CHANNEL NETWORK VIDEO RECORDER



#### GV-1601-K

- 16 CH HD NVR
- Operating System: Embedded Linux
- Recording Resolution up to 8 MP
- 1\*SATA HDD
- Up to 8TB capacity for each HDD
- H.265+ Video Compression
- Video Output: 1xHDMI, 1xVGA
- ONVIF Compatible
- Audio: In/Out
- Applied Intelligence Support
- Analytics Dashboard

### 16 CHANNEL NETWORK VIDEO RECORDER



#### GV-1602

- 16 CH HD NVR
- Recording Resolution up to 8 MP
- 2\*SATA HDD
- Up to 8TB capacity for each HDD
- H.265+ Video Compression
- Video Output: 1xHDMI, 1xVGA
- ONVIF Compatible
- Audio: In/Out
- Applied Intelligence Support
- Analytics Dashboard

### 32 CHANNEL NETWORK VIDEO RECORDER



#### GV-3602-K

- 32 CH HD NVR
- Recording Resolution up to 8 MP
- 2\*SATA HDD
- Up to 8TB capacity for each HDD
- H.265+ Video Compression
- Video Output: 2xHDMI, 1xVGA
- ONVIF Compatible
- Audio & Alarm: In/Out
- Applied Intelligence Support
- Analytics Dashboard

### 32 CHANNEL NETWORK VIDEO RECORDER



#### GV-3204-R

- 32 CH HD NVR
- Recording Resolution up to 8 MP
- 4\*SATA HDD
- 1\*e-SATA
- Up to 10TB capacity for each HDD
- H.265+ Video Compression
- Video Output: 2xHDMI, 1xVGA
- ONVIF Compatible
- Audio & Alarm: In/Out
- Applied Intelligence Support
- Analytics Dashboard

### 32 CHANNEL NETWORK VIDEO RECORDER



#### GV-3208-R

- 32 CH HD NVR
- Recording Resolution up to 8 MP
- 4\*SATA HDD
- 1\*e-SATA
- Up to 8TB capacity for each HDD
- H.265+ Video Compression
- Video Output: 2xHDMI, 1xVGA
- ONVIF Compatible
- Audio & Alarm: In/Out
- Applied Intelligence Support
- Analytics Dashboard

### 64 CHANNEL NETWORK VIDEO RECORDER



#### GV-6408 | GV-6408-R

- 64 CH HD NVR
- Recording Resolution up to 8 MP
- 4\*SATA HDD | 8\*SATA HDD
- 1\*e-SATA
- Up to 18TB Enterprise Class
- Up to 12TB Surveillance HDD
- H.265+ Video Compression
- RAID Support: 0, 1, 5, 6, 10
- ONVIF Compatible
- Audio & Alarm: In/Out
- Applied Intelligence Support
- Analytics Dashboard

### 128 & 256 CHANNEL NETWORK VIDEO RECORDER



#### GV-12809-R | GV-12809-R(K)

- 128 CH HD NVR | 256 CH HD NVR
- Recording Resolution up to 8 MP
- 16\*SATA HDD
- 1\*e-SATA
- Up to 18TB each Enterprise Class
- Up to 12TB Surveillance HDD
- H.265+ Video Compression
- RAID Support: 0, 1, 5, 6, 10
- ONVIF Compatible
- Audio & Alarm: In/Out
- Applied Intelligence Support
- Analytics Dashboard

## CUSTOM-FIT SOLUTIONS



**VMS**

**Video Management System**



**NeuBit™**  
Listen To Your Data

**Command & Control Solution**



**CLARIFY**

**Artificial Intelligence Solution**



 **CTOSNS™**

**Internet of Things**

## ACTIVE IN APPLICATIONS



**Retail**



**Homeland Security**



**Transportation**



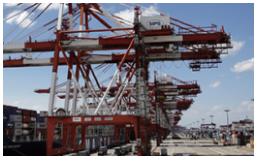
**Banking**



**Manufacturing**



**Building Automation**



**Factories & Mining**



**Government**



**Smart City**



**Healthcare**



**Campus & Education**



**Hospitality**



# MISSION CRITICAL DELIVERED

## Kenya Nairobi International Airport, Kenya

GVD Solution: GVD VMS E300x3, GVD Video Wall D300x3, GVD Enterprise NVR M6016x2, GVD DAS Server, GVD Storage Server S6016x2, 200 x MP IP Cameras (Planet, Videotec).



## Railway High-speed (CRH), China

GVD Solution: GVD NVR M640, M620, M350 / 300pcs IP Cameras video stream for facial recognition over 25 stations.



## Kerala Government Secretariat, India

GVD Solution: GVD Solution: Axis IP Cameras x 67 / GVD NVR M6016 x2 / GVD Extended Storage S6024 x4 and GVD Failover X5016 x1



## Gasoline Stations with Ai LPR Analytic-Taiwan

Ai video for vehicle LPR recognition and human behavior analysis at Gasoline Stations, Private cloud for centralized monitoring to all Stations, Support CPC (Taiwan Petroleum Company) POS integration to speed up the payment process



## GVD AI VMS Protecting #2 City - Taiwan

GVD Solution: TaiChung, Taiwan. Taiwan #2 City with 2.8M population, Integrated +20000 cameras from existing IP cams or NVR/DVR, All cameras onto Cloud Central Control Room with AI analysis capability for particular object detection and search.



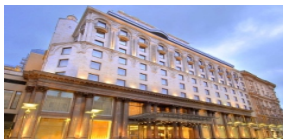
## City Surveillance, France

GVD Solution: GVD NVR M625, M455, M6016, M350, M455+M90, M610, IP Cameras: Pelco, Etrovision, Messoa, Mesh system: Fluidmesh



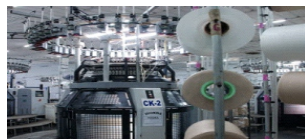
## Moscow Hyatt Hotel-Russia

GVD Solution: GVD NVR M6024x7 + GVD, WORKSTATION E150x3, and monitoring 400 IP cameras



## Indian Textile Fabrics Factories, India

GVD Solution: GVD NVR M4006 / Brickcom & UDP Megapixel IP Cameras



## KSEB Dam - Kerala

GVD Solution: KSEBL has 59 storage dams/diversion structures located in 8 districts including five very high (height greater than 100m) dams of national importance. CMS GVD has catered 16 DAMS with M6 series enterprise NVR with application to monitor

## Nuclear Power Plant, Japan

Highest security is required in this power plant. GVD VMS is the new deployment to replace old Sony NSR servers. Multiple Workstations and K1000 controllers are also installed in this power plant.



## UAE Etihad Tower -UAE Abu Dhabi

GVD Solution: GVD NVR M640 + 1200pcs IP Cameras / GVD VMS Platform / GVD VMS platform helps them build-up a 28x monitors Video Wall in control center / GVD DAS Storage Server M800 / Storage server achieves 180 days storage retention project requirement / GVD Failover Server M900 & N+1 solution guarantee 24x7 surveillance operation without any NVR breakdown in the system



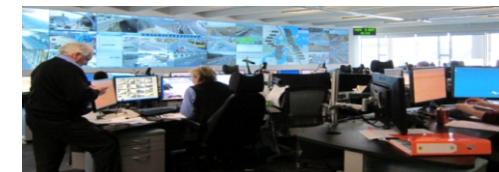
## Government Bank Ai-Cloud VMS

Thai biggest Government Bank with 1000 branches in Thailand (Phase -I for 200). GVD VMS 3.8 Ai-Ready Cloud Solutions to have IP cams direct link to Bank HQ VMS. GVD AppPack for NEC Facial Recognition solutions for higher standard security protection.



## Auckland City Surveillance (Traffic Operations Center)

GVD Solution: Video Wall consists of 45 Monitors to display all motorway cameras & retrieve Transport Dept's cameras through CMS E100, 5 to 6 operators will be working at their desks and control the video wall with GVD system at the same time training room with another set of CMS E100 for new operators to get familiar or special operations.



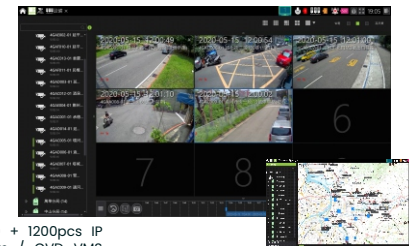
## Dayanand Medical College & Hospital-India

GVD Solution: GVD NVR M6024 x2, M4006 x1, GVD VMS Management E300 x1, GVD Video Wall Decoder x2 + 200 IP cameras



## Smart City - Taipei

Added +400 cameras 4G wireless cams plus 350 VMS E4200 Workstations with existing 18000 cams to enhance Taipei dead-corners security in this huge metropolitan. GVD Cloud VMS 4.0 support ONVIF-G/S Profile for easy edge-storage connectivity to IP cams for GVD centralized Cloud Storage



## Government Building-Malaysia

GVD Solution: GVD NVR M6000+64 Pcs IP camera, GVD VMS workstation, GVD Failover server X5000, GVD video wall D300, GVD critical Failover server takes over breakdown server instantly to prevent image loss. Rack-mount NVR and VMS with Redundancy power protect this priceless facility.





# MISSION CRITICAL DELIVERED

## Golden Temple-India

GVD Enterprise NVR M6024, GVD Mini NVR M95 integrated with IP Cameras for a 24x7 basis surveillance monitoring



## The Biggest Taiwan Steel Mill& Refinery

20 GVD NVRs with Central VMS and CCTV Room to manage the large area campus with 24x7 operation needs



## Petronet LNG - India

GVD is protecting Petronet huge facilities and personnel using last VMS and IP cameras.



## Japan South Liquefied Natural Gas Harbor

GVD VMS solution with Videowall to monitor shipment and process all the time



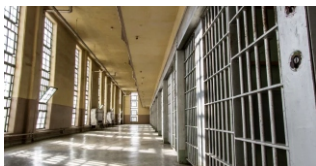
## Goa Casino Resort alone India Ocean

2x Phases Installations with M6000 Enterprise Rack-mount NVR for Casino and resort protection



## Maraburong Prison-Brunei

Adapted Latest IP surveillance system by using GVD VMS with M6000 NVR, Both Failover and ACS are integrated with GVD VMS for 100 guaranteed protection.



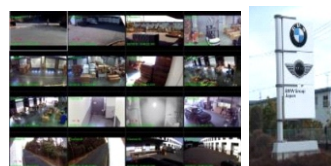
## USA Dodge & Japan BMW

GVD Solution: GVD's NVRs with 30+ IP cameras are integrated with NVR with high performance and flexibility to enhance megapixel cameras with high reliability



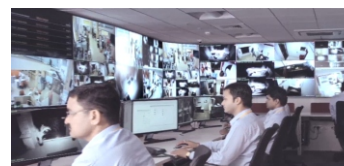
## USA Dodge & Japan BMW

GVD Solution: IP cameras are integrated with GVD NVR to protect expensive parts in 24x7 basis. GVD highly reliable HD NVR us must to meet BMW mission critical requirements.



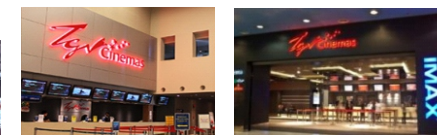
## Axis Bank-India

GVD Solution: GVD NVR installed over 4000 branches to manage 45000+ channels to monitor PAN India branches & 35 Currency Chest from command centre.



## TGV 20x Cinemas - Malaysia

GVD Solution: GVD NVR E150x10, GVD NVR M4006x50 installed 20x Malaysian theatres to monitor 800+ cameras



## ME Bank Security-Middle East

GVD Solution: Monitoring 1800+ IP cameras on installed GVD NVRs 110 PCs (M4006)



## HDFC Bank - India

GVD Solution: GVD NVRs successfully installed in HDFC branches for 24x7 Live monitoring.



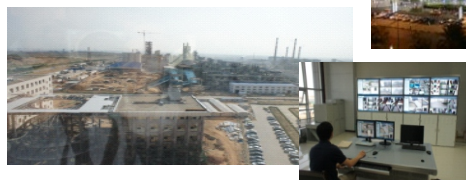
## Mongolia Luxury Hotel-China

GVD Solution: Monitoring 300+ cameras by installing GVD NVR M630 & M640, Also installed GVD workstation E150 with eras successfully to protect hotel & facility at a 24x7 base with robust and reliable GVD Hardware.



## Coal Refinery Factory-China

GVD Solution: GVD NVR integrates 200+ IP cameras from Command Control Centre for 24x7 monitoring.



## NISP Bank-Indonesia

GVD Solution: 1500 IP cameras are monitoring from 500 branches by GVD NVR M600, also M900 Failover server installed + Backup server installed at main data center for high stability with recording for 180 days.



## Edgewood Independent School USA

GVD Solution: Edgewood Independent school monitoring 3000+ cameras on GVD NVR M6016, 7 NVRs are installed to monitor In & out of the school. Also monitoring their Outside activities to keep an eye on each student for their safety. Edgewood Independent school is very satisfied with the installing GVD reliable NVR and helping them with 180 days recording.

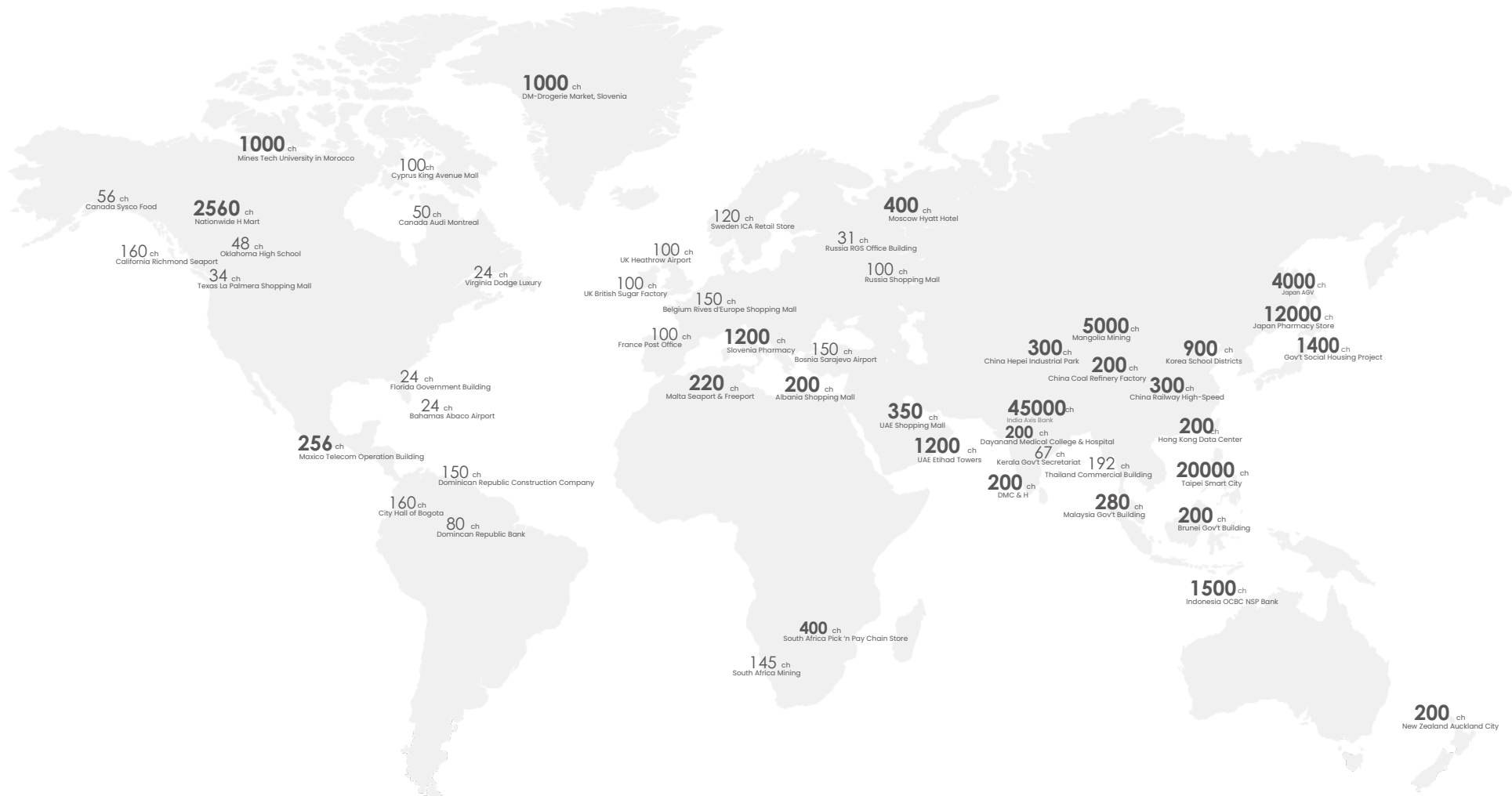


## Jerudong International School -Brunei

GVD Solution: Monitoring 130+ IP cameras over GVD NVR M6000x4, Also GVD VMS E300X5, GVD robust Failover server x1 + GVD Directory server x2 + GVD C5001-ACS x2 with Cardax.



# WORLDWIDE PROJECTS DELIVERED



## PRE-SALES SERVICES

Pre-sales Services focuses on New Project Engagement and Penetration by offering customers different solutions for different vertical applications.

Tender / Spec Clarification

Product Presentation  
(Online / Onsite)

Product Demo

Proposal generation

Proof of Concept

## PROJECT MANAGEMENT

Project Management Service helps you to finish your project implementation by giving you all the support and tools you might require at this stage.

Pilot Site Demo Setup

Onsite Installation and  
Implementation Assistance

User Acceptance Test Support

Technical Training by Request

## MAINTENANCE

Maintenance service helps you keep your system running at the top level by offering you dedicated consultant function for all your inquiries about GVD Product and Solutions.

Online Ticket Support with  
Tracking Function

Priority Support and  
Fast Response

FAQ and Technical Notes

GVD Product inquiries



**Contact Us:**

Email: [sales@geniusvision.in](mailto:sales@geniusvision.in)

Address: Genius Vision Digital Pvt. Ltd.

601, Star Tower, Sector 30, Gurugram - 122001

Tel: +91-9717 3046 93 / +91-8860 5136 99 / +91-124 4014917

Support: +91-920 554 6001



[www.geniusvision.in](http://www.geniusvision.in)